

# Quick Start Guide for Linux Lite 1.6

## Copyright

Copyright © 2011 Linpus Technologies Inc. All rights reserved. No part of this publication may be reproduced, transmitted, transcribed, stored in a retrieval system, or translated into any language, in any form or by any means, without the prior written permission of Linpus Technologies Inc.

## Disclaimers

Linpus Technologies Inc. makes no representations or warranties of any kind with respect to the information herein described and specifically disclaim any implied warranties of merchantability, fitness for any particular purpose or non-infringement. Further, Linpus Technologies Inc. reserves the right to revise this documentation and to make changes from time to time in the content without obligation of Linpus Technologies Inc. to notify any person of such revisions or changes.

# Table of Contents

**COPYRIGHT.....2**

**DISCLAIMERS.....2**

**1.OVERVIEW.....4**

**2.INSTALLATION.....4**

    2.1 WHY USE A WINDOWS INSTALLATION?..... 4

    2.2 HOW TO INSTALL AS A WINDOWS APPLICATION?..... 5

    2.3 HOW TO UNINSTALL?..... 7

    2.4 OUT OF BOX EXPERIENCE..... 8

**3.GETTING STARTED.....11**

    3.1 GNOME 3 DESKTOP..... 11

    3.2 ONLINE UPDATE SERVICE..... 15

# 1. Overview

Linpus Lite, the choice of several of the world's largest OEMs in the personal computer space, is a Linux operating system specially designed for a better mobile Internet experience. It includes an extremely powerful yet versatile desktop, all-in-one, notebook and netbook operating system. The new version of Linpus Lite, creates the perfect balance for those seeking productivity but still enjoy a fulfilling multi-media and online experience.

The Linpus Lite 1.6 desktop edition is a free version of Linpus Lite 1.6. It includes a unique way of downloading and installing features and functionality that grants you greater flexibility and control over your system. Linpus Lite 1.6 initial download is quick and small; once installed you can go through our liveupdate function to download not only the applications you want, but advanced UI features.

Linpus Lite 1.6 key features:

- Custom Gnome 3 user experience, improved dock panel with notifications and open window previews.
- Mozilla Firefox for fast and safe web browsing.
- TubeFun for your personal YouTube internet video browsing
- Integrate most popular social networking and instant messengers.
- Linpus live update service provides more system advanced features and access to hundreds of free open source applications.
- A network manager with support for numerous 3G modems, WLAN and LAN connectivity.

The system requirements to install the Linpus Lite 1.6 desktop edition are as follows:

- CPU: Intel/AMD 1GHz or higher processor
- HDD: Recommended 6GB (SATA/IDE/SSD) and 4GB free contiguous space
- Memory: Recommended 1GB RAM or better
- VGA: Intel, nVidia or ATI VGA cards
- OS version: Microsoft Windows 7(32 bit)/Vista/XP

## 2. Installation

Linpus Lite 1.6 offers a Windows installer which allows you to install it as a Windows application without creating a Linux partition. For this method, a pre-installed Windows OS, i.e. Windows XP, vista, or 7, is required and after the installation, you will have a dual boot Windows/Linpus Lite machine ready to use.

### 2.1 Why use a Windows Installation?

Many Windows users who are interested in trying Linpus Lite system are afraid of repartitioning their drives. Linpus Lite 1.6 offers option to install the OS as dual-boot by installing it as a huge file inside of Windows and then modifying

the Windows boot loader to add an entry for Linpus Lite system. In this case, there is no risk of accidentally deleting your entire drive and you don't have to know anything about partitions. You also can easily remove the Linpus Lite system from Windows if you don't want it any more.

## 2.2 How to Install as a Windows Application?

If you want to install Linpus Lite 1.6 as a Windows application, you can download and run the installer in your Windows OS (see Figure 2-1).



Figure 2-1 Welcome page

From the welcome page, you can click Next button to move to the EULA page (see Figure 2-2).



Figure 2-2 EULA page

In the EULA page, the Next button will be grayed out until you check the box "I have read and understand the Linpus

EULA” terms.

When you click the Next button, it will go to the Target drive page (see Figure 2-3) and you can choose the target drive for installation page. You can configure the installation size (from 6GB to the maximum available size of the target drive) from the drop down list. The Install button will be grayed out if the selected drive has less than 6G free disk spaces available.

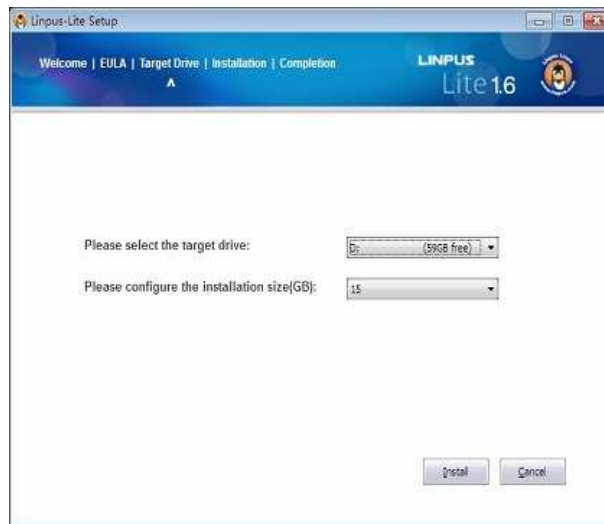


Figure 2-3 Target drive page

When the Install button is clicked from the Target drive page, it will go to the Installation page to download the packages, and then the Linpus Lite 1.6 will be installed under your Windows OS (see Figure 2-4).

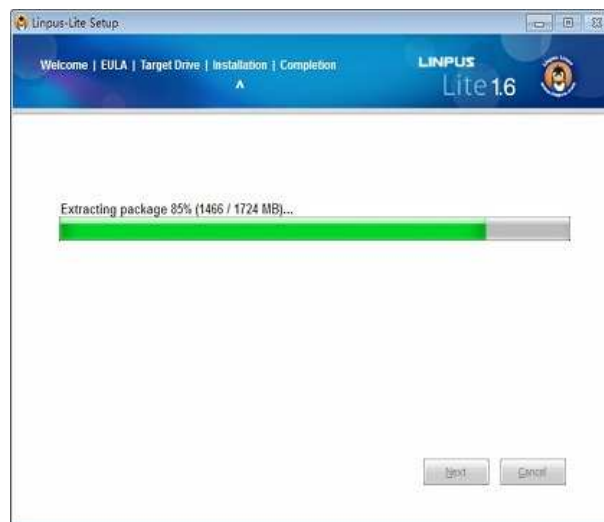


Figure 2-4 Installation page

When the installation is done, a Completion page will be shown as Figure 2-5. You can select the Reboot now option to launch the Linpus Lite 1.6 or I want to manually reboot later option to exit the windows installer.

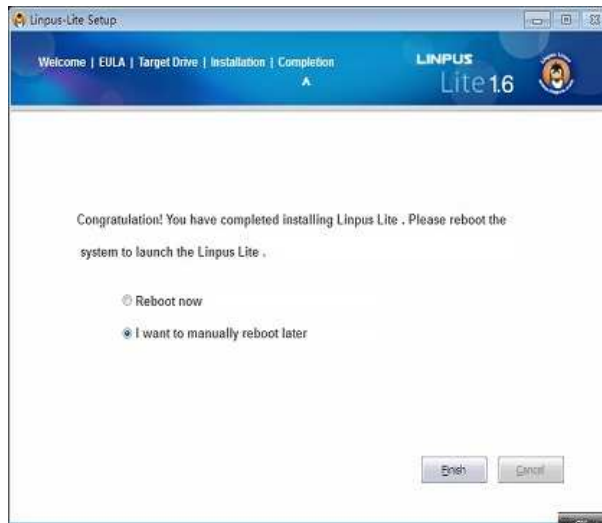


Figure 2-5 Completion page

## 2.3 How to Uninstall?

To uninstall the Linpus Lite 1.6 from your Windows system, you may either run a uninstaller named Uninstall-Linus\_Lite.exe (see Figure 2-6) from Start > All Programs > Linpus-Lite (see Figure 2-7), or uninstall from Control Panel > Add/Remove Programs.

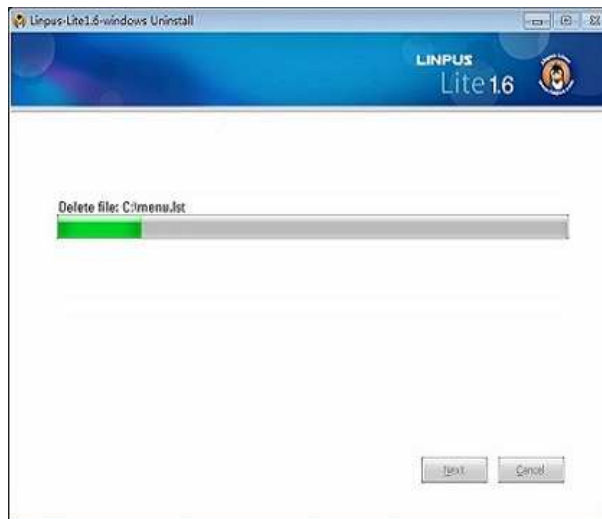


Figure 2-6 Running uninstaller

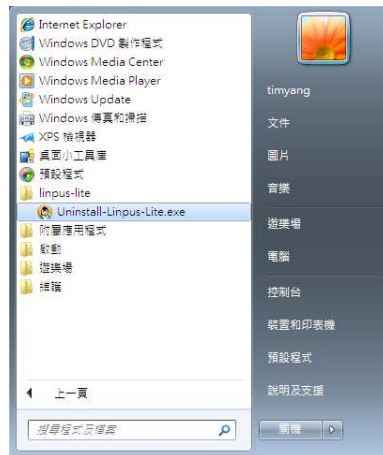


Figure 2-7 Uninstaller on start menu

## 2.4 Out Of Box Experience

After the Linpus Lite 1.6 is successfully installed and when you boot up the system the first time, you will enter the OOBE (Out Of Box Experience) program to setup your personal settings. There will be the following steps in OOBE: Language setting, User name and password setting, Location setting, Time zone setting and Hardware profile.

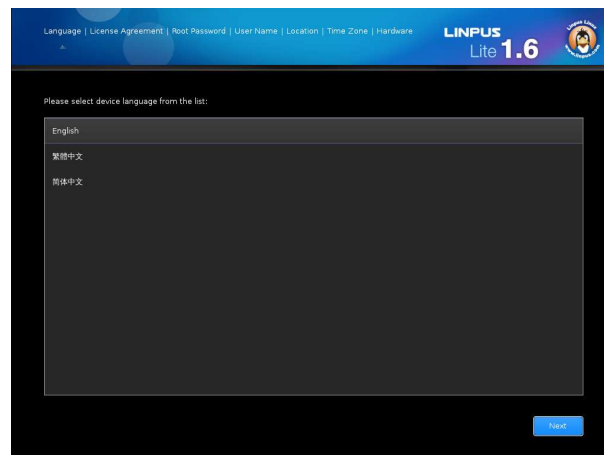


Figure 2-8 Language page of OOBE

You will be asked to select a language for your system first boot (see Figure 2-7). Linpus Lite 1.6 supports three languages: English, Simplified Chinese and Traditional Chinese. After the language is selected, you can click [Next](#) button to continue.

In the License Agreement page, you will have to agree to the Linpus EULA term.

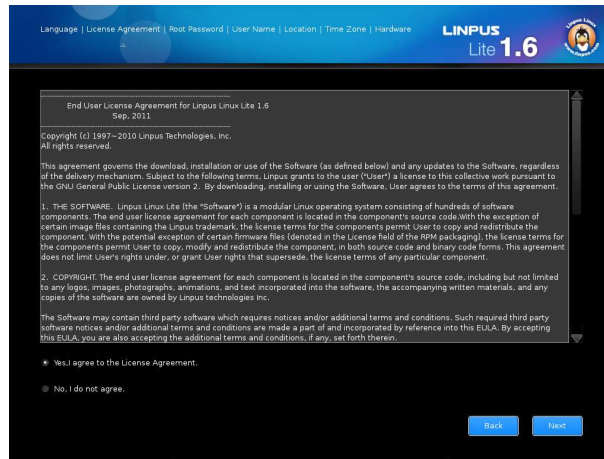


Figure 2-9 License Agreement page

In the Root password page, you will be asked to configure “root” (Administrator) password (see Figure 2-10).

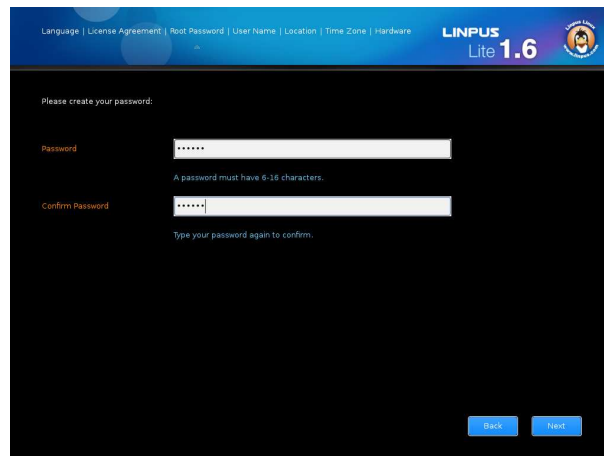


Figure 2-10 Root password page

In the User name page, you will be asked to configure your user name and password (see Figure 2-11).

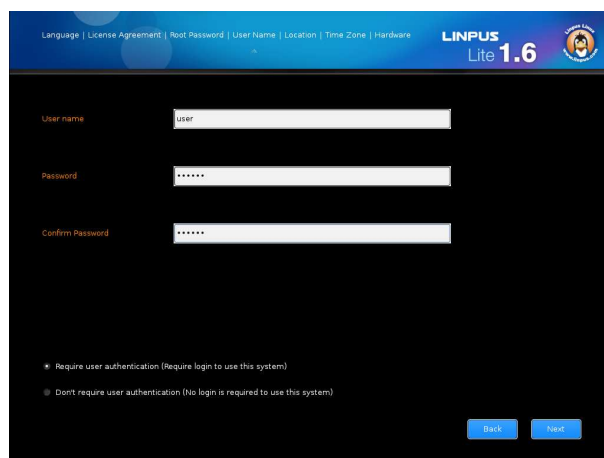


Figure 2-11 User name page

In the Location page (see Figure 2-12), you can configure your country/region and your keyboard layout.

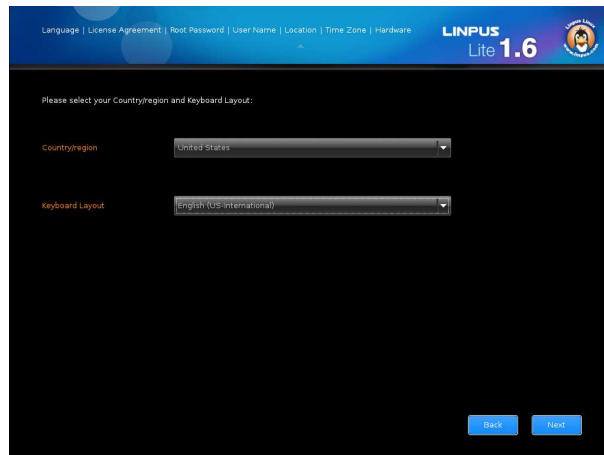


Figure 2-12 Location page

In the Time zone page (see Figure 2-13), you can configure your time zone.

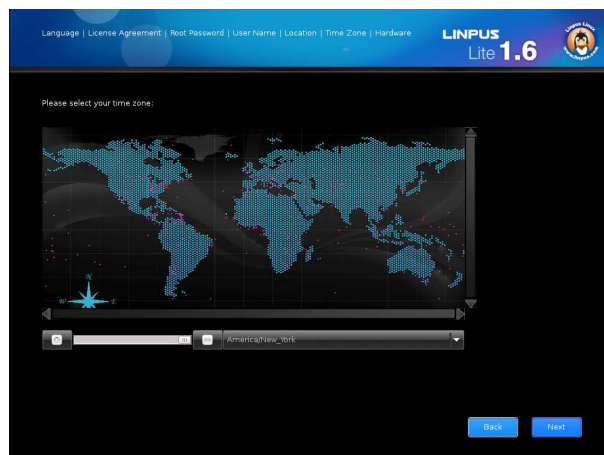


Figure 2-13 Time zone page

In the Hardware profile page (see Figure 2-14), you will be asked to send your hardware profile to Linpus. This info is especially useful for Linpus to improve our support on all popular hardware and platforms.

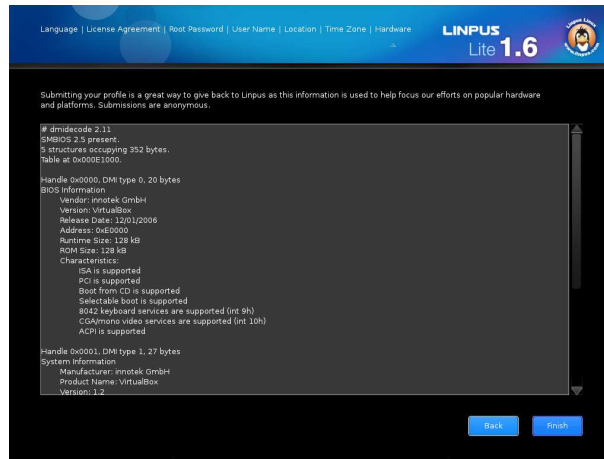


Figure 2-14 Hardware profile page

## 3. Getting Started

### 3.1 Gnome 3 Desktop

The default desktop for Linpus Lite 1.6 is the traditional Gnome desktop (see Figure 3-1). You can then go to Liveupdate to customize your desktop with a number of advanced features. For example, Gnome3 with a new “Today” panel displaying your schedule for that day and the weather forecast by default (see Figure 3-3). In addition there is an improved dock, instant notifications and a range of applications. In Gnome 3 desktop, all applications with similar purposes are grouped together in “Applications” panel. There are totally 8 categories by default: Accessories, Games, Graphics, Internet, Office, Other, Sound & Videos and System Tools (see Figure 3-4).

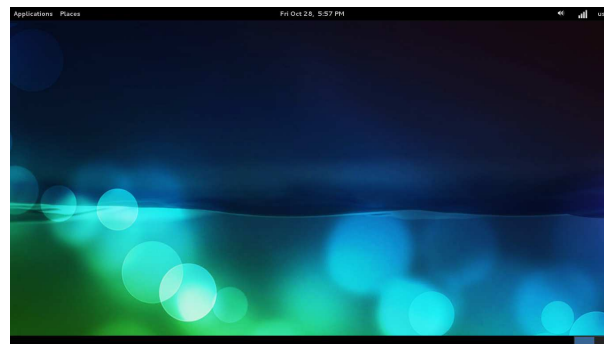


Figure 3-1 Gnome desktop

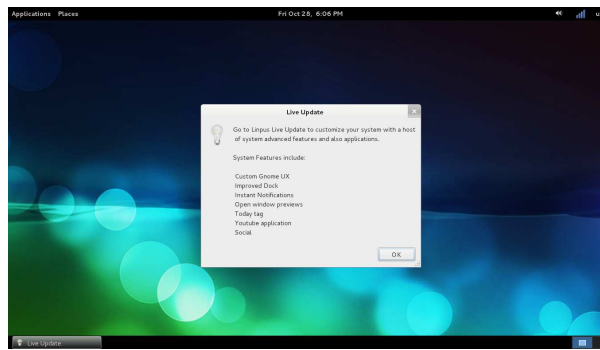


Figure 3-2 Upgrade notification



Figure 3-3 Gnome 3 desktop – Today panel

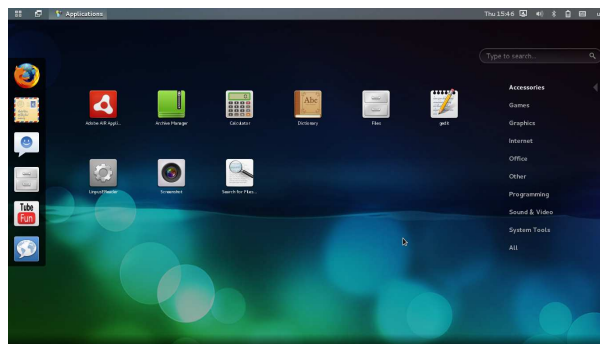


Figure 3-4 Applications Panel

- Accessories: system utilities
- Games: Fun programs like games
- Graphics: view photo programs
- Internet: Programs that access and work through the Internet
- Office: Spreadsheet, work processor and presentation programs
- Other: other applications.
- Sound & Videos: multi-media programs
- System Tools: Setting tools

If you want to configure the themes and background picture, you can click Applications panel > System tools >

Settings to launch the “Background” setting tool (see Figure 3-5).

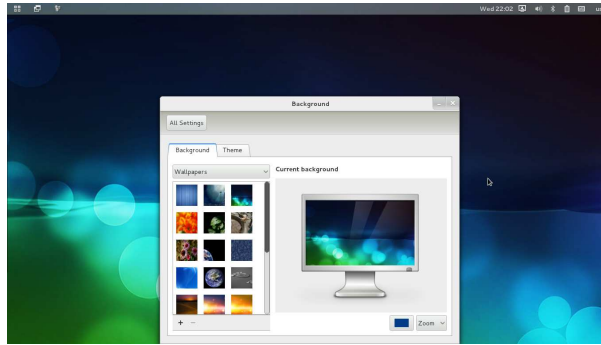


Figure 3-5 Background & Theme configuration

The default panel can be dragged and dropped to swap between Today, Windows and Applications (see Figure 3-6).

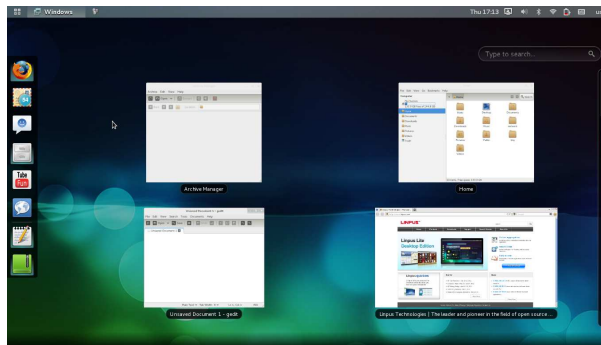


Figure 3-6 Change “Windows” as default panel

You can drag and drop to add favorite applications from the “Applications” panel to the dock panel. When an application is launched that icon will also display on the dock panel. To then display the thumbnail preview of the opened window (see Figure 3-7) you can simply mouse over or right click. After an application window is launched, the dock panel will hide automatically. Dock panel will be enable when you move your mouse cursor near the left border of the desktop.



Figure 3-7 Thumbnail preview of opened window

## Instant Notifications

When you create a mail box, YouTube account or social networking account through “Mail” (Evolution), “TubeFun” or “Gwibber”, Linpus Lite will display instant notifications of incoming e-mail, new subscription (video) or new messages on the application icon (see Figure 3-8). Gnome 3 desktop also fully integrates Empathy chat and message function (see Figure 3-9).

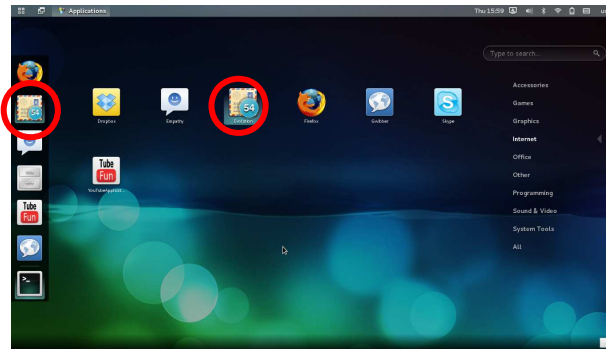


Figure 3-8 Instant notifications

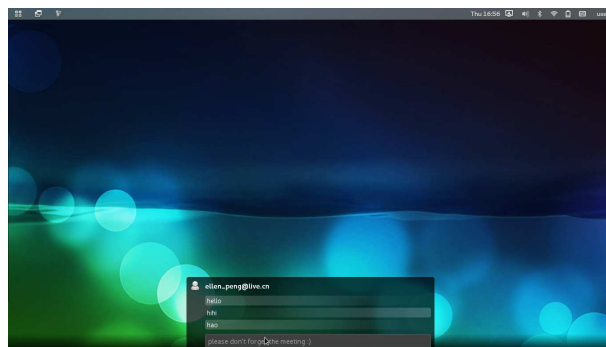


Figure 3-9 Instant messages

## Launch Manager

Launch manager is a quick and simple control panel for you to change your systems major settings. You can click the launch manager icon in the top right corner of Gnome panel or launch via the function keys. All functions with similar purposes are grouped together in the “Launch Manager” panel. There are in total 5 categories: Connection, Video output switcher, Display resolution, Sound control and Power off (see Figure 3-10).

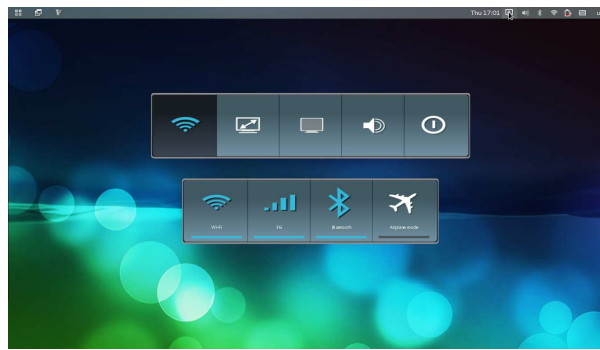


Figure 3-10 Launch manager

- Connection: 3G, Bluetooth, WiFi devices control and airplane mode.
- Video switcher: video output switch between LCD, Clone & D-sub/HDMI display only.
- Display resolution: change system resolution.
- Sound control: system volume and microphone control.
- Power off: Shut down, Sleep, Lock Screen and Logout.

## 3.2 Online Update Service

If your network is connected, you will be notified that new applications are available for you to download and install from the Linpus server.

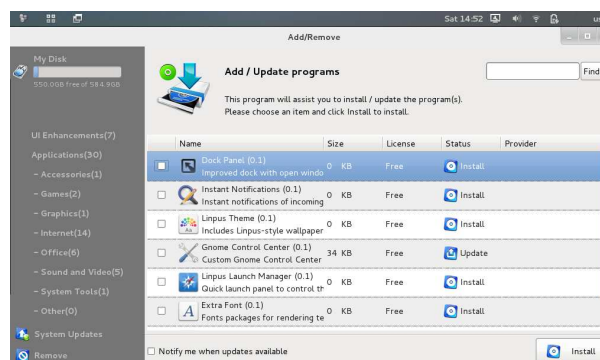


Figure 3-11 Online update service

You can launch the Linpus online update service (see Figure 3-11) from under System Tools > Live Updates > Add/Remove. The icons of those newly added applications will be displayed on the “Applications” panel. After you select the item and click the Install button, you can start to install new applications (see Figure 3-12).

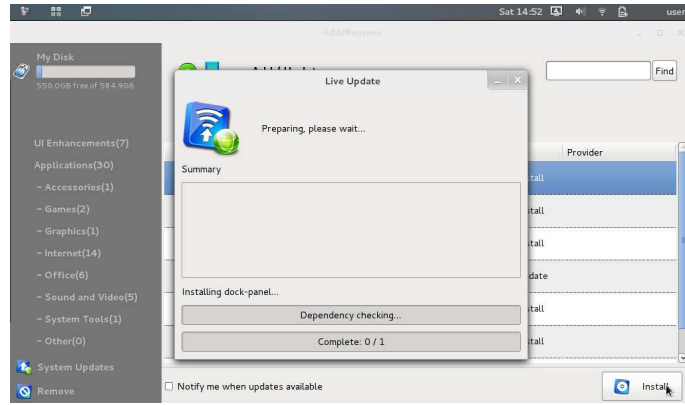


Figure 3-12 Installing new application from online update service