

# Quick Start Guide for Linpus Lite 1.6

## Copyright

Copyright © 2011 Linpus Technologies Inc. All rights reserved. No part of this publication may be reproduced, transmitted, transcribed, stored in a retrieval system, or translated into any language, in any form or by any means, without the prior written permission of Linpus Technologies Inc.

## Disclaimers

Linpus Technologies Inc. makes no representations or warranties of any kind with respect to the information herein described and specifically disclaim any implied warranties of merchantability, fitness for any particular purpose or non-infringement. Further, Linpus Technologies Inc. reserves the right to revise this documentation and to make changes from time to time in the content without obligation of Linpus Technologies Inc. to notify any person of such revisions or changes.

# Table of Contents

<b>COPYRIGHT.....</b>	<b>2</b>
<b>DISCLAIMERS.....</b>	<b>2</b>
<b>1.OVERVIEW.....</b>	<b>4</b>
<b>2.INSTALLATION.....</b>	<b>4</b>
2.1 WHY USE A LINUX PARTITION INSTALLATION?.....	4
2.2 HOW TO MAKE A LINUX PARTITION INSTALLATION?.....	5
2.3 OUT OF BOX EXPERIENCE.....	7
<b>3.GETTING STARTED.....</b>	<b>10</b>
3.1 GNOME 3 DESKTOP.....	10
3.2 ONLINE UPDATE SERVICE.....	13

# 1. Overview

Linpus Lite, the choice of several of the world's largest OEMs in the personal computer space, is a Linux operating system specially designed for a better mobile Internet experience. It includes an extremely powerful yet versatile desktop, all-in-one, notebook and netbook operating system. The new version of Linpus Lite, creates the perfect balance for those seeking productivity but still enjoy a fulfilling multi-media and online experience.

The Linpus Lite 1.6 desktop edition is a free version of Linpus Lite 1.6. It includes a unique way of downloading and installing features and functionality that grants you greater flexibility and control over your system. Linpus Lite 1.6 initial download is quick and small; once installed you can go through our liveupdate function to download not only the applications you want, but advanced UI features.

Linpus Lite 1.6 key features:

- Custom Gnome 3 user experience, improved dock panel with notifications and open window previews.
- Mozilla Firefox for fast and safe web browsing.
- TubeFun for your personal YouTube internet video browsing
- Integrate most popular social networking and instant messengers.
- Linpus live update service provides more system advanced features and access to hundreds of free open source applications.
- A network manager with support for numerous 3G modems, WLAN and LAN connectivity.

The system requirements to install the Linpus Lite 1.6 desktop edition are as follows:

- CPU: Intel/AMD 1GHz or higher processor
- HDD: Recommended 6GB (SATA/IDE/SSD) and 4GB free contiguous space
- Memory: Recommended 1GB RAM or better
- VGA: Intel, nVidia or ATI VGA cards

## 2. Installation

Linpus Lite 1.6 offers a Linux partition installation, an entirely separate partition running EXT4 file system will be created. That means you need to make sure you have enough space on your hard drive to accommodate the new setup.

### 2.1 Why use a Linux Partition Installation?

For the following scenarios, you may use the Linpus partition installation method:

- If you don't have a Windows OS
- You want to install Linpus Lite to free space on your drive (if there is)
- You want to install Linpus Lite on your full drive and erase Windows completely

## 2.2 How to make a Linux Partition Installation?

If you want to make a Linux partition installation, you can first download the ISO and then burn a DVD for installation. When your DVD is ready, please insert the DVD and reboot your computer to install the Linpus Lite 1.6.

Note: Your computer's BIOS must be set to boot from DVD/CD first, otherwise, it will boot from your hard disk and automatically go to whatever OS is installed on your computer.

Once your BIOS is configured to boot from DVD/CD first, if you have the DVD in the ODD drive, you should see the screen like Figure 2-1. You can select the Installation option to launch the installer. Another option, Boot from disk exists as a matter of convenience in the event you left the DVD in the drive and therefore actually want to go straight to an operating system.

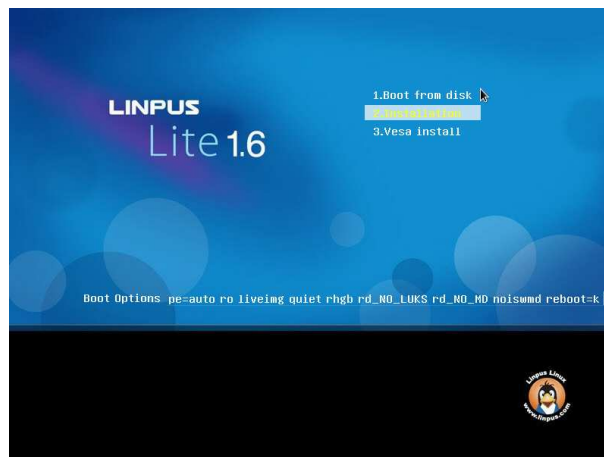


Figure 2-1 Booting screen

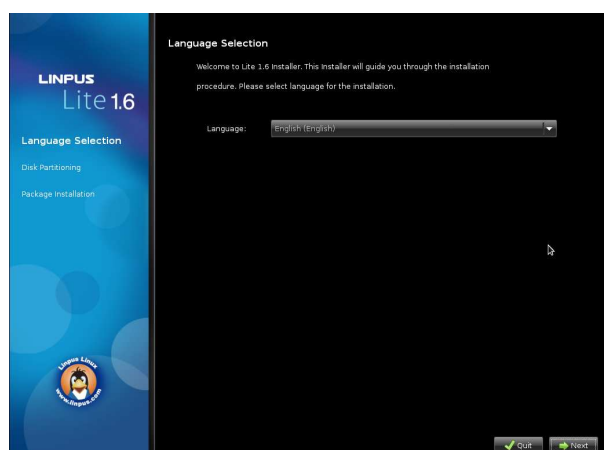


Figure 2-2 Language selection page

Figure 2-2 displays the language selection page of the installation. The CD installer supports three languages: English, Simplified Chinese and Traditional Chinese. You can click Next button to move to the disk partitioning page (Figure 2-3). In the disk partitioning page, you can select to install the Linpus Lite 1.6 to the whole disk, free space, or a specified

Linux partition on your hard disk. The new partition configuration will be applied until you click Write changes to disk button to confirm (see Figure 2-4).

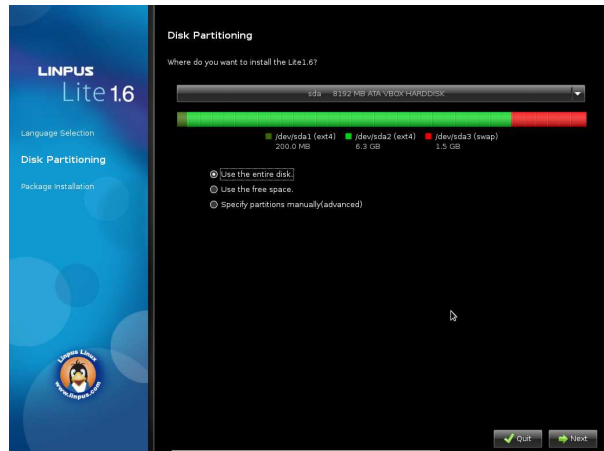


Figure 2-3 Disk partitioning page

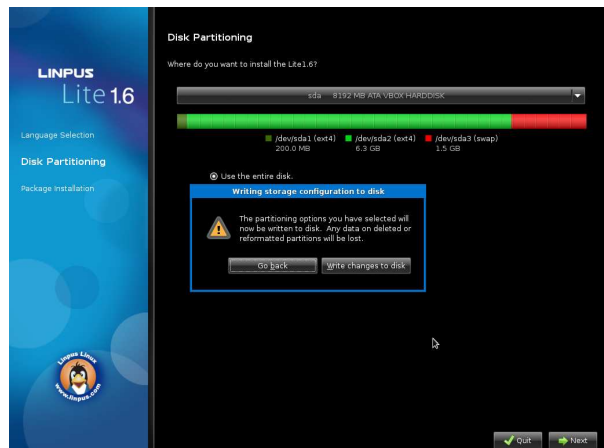


Figure 2-4 Confirm new partition configuration

After disk partitioning configuration completed, installation will start to install package (see Figure 2-5). When the installation is done, an Installation completion page will be shown as Figure 2-6. You can click the Reboot button to restart the system.

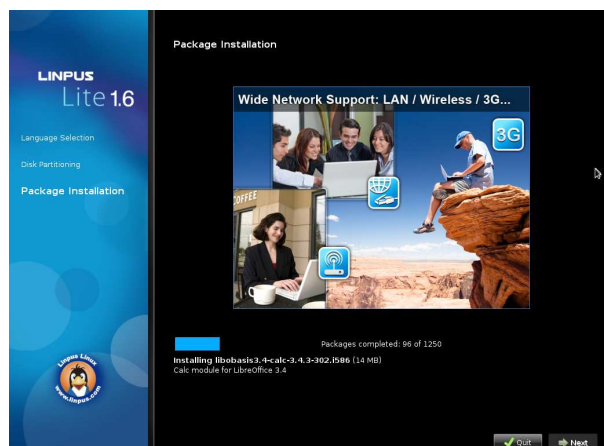


Figure 2-5 Package installation page

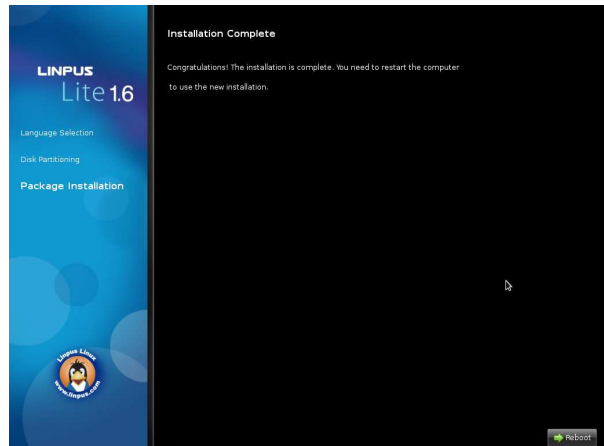


Figure 2-6 Installation completion page

## 2.3 Out Of Box Experience

After the Linpus Lite 1.6 is successfully installed and when you boot up the system the first time, you will enter the OOBE (Out Of Box Experience) program to setup your personal settings. There will be the following steps in OOBE: Language setting, User name and password setting, Location setting, Time zone setting and Hardware profile.

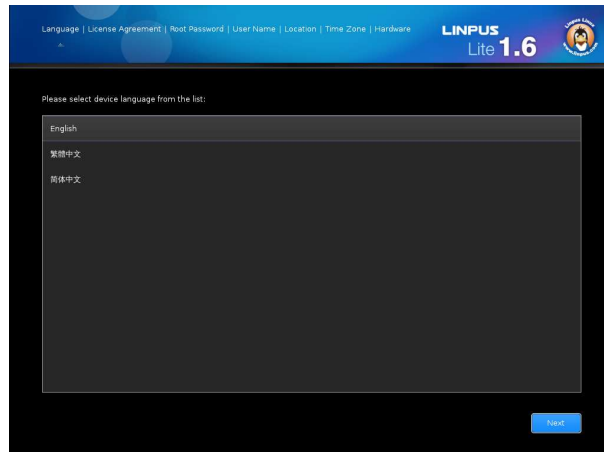


Figure 2-7 Language page of OOBE

You will be asked to select a language for your system first boot (see Figure 2-7). Linpus Lite 1.6 supports three languages: English, Simplified Chinese and Traditional Chinese. After the language is selected, you can click Next button to continue.

In the License Agreement page, you will have to agree to the Linpus EULA term.

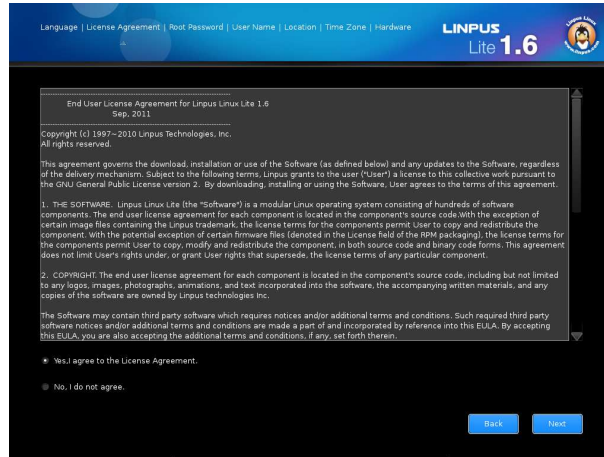


Figure 2-8 License Agreement page

In the Root password page, you will be asked to configure “root” (Administrator) password (see Figure 2-9).

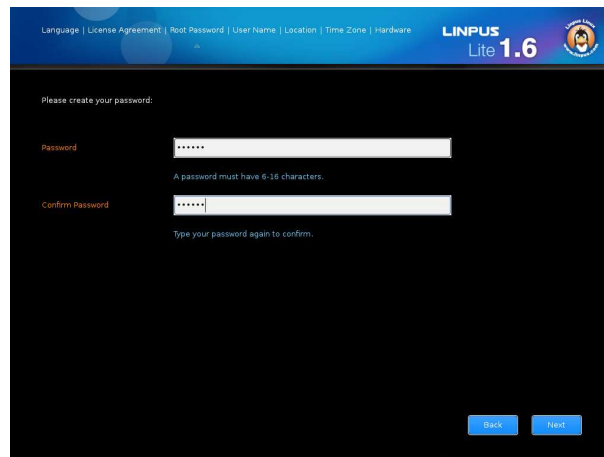


Figure 2-9 Root password page

In the User name page, you will be asked to configure your user name and password (see Figure 2-10).

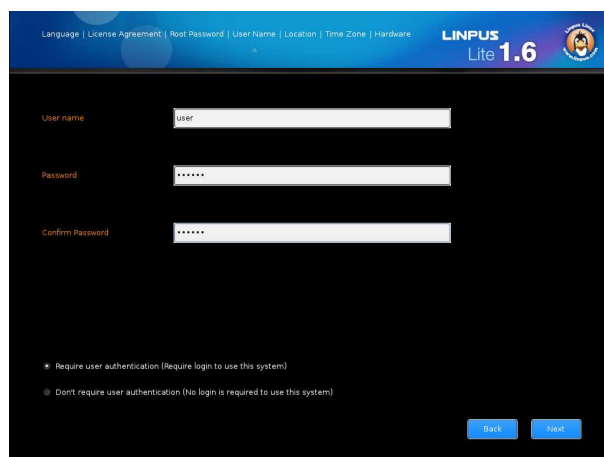


Figure 2-10 User name page

In the Location page (see Figure 2-11), you can configure your country/region and your keyboard layout.

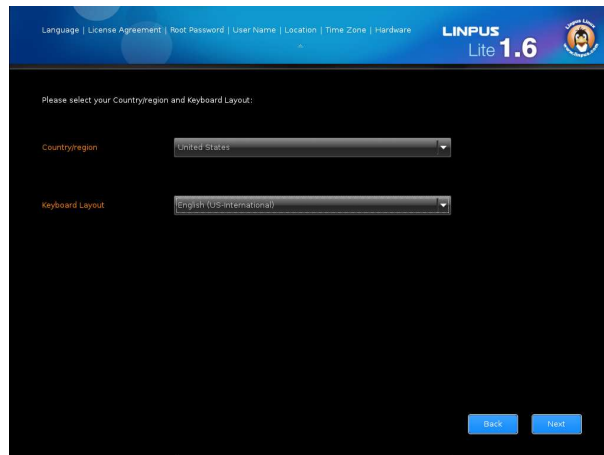


Figure 2-11 Location page

In the Time zone page (see Figure 2-12), you can configure your time zone.

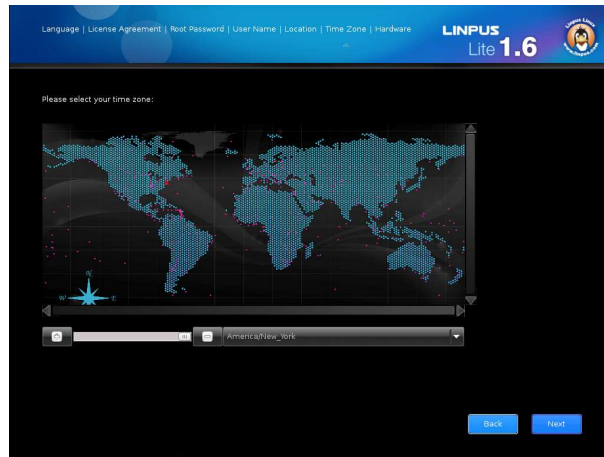


Figure 2-12 Time zone page

In the Hardware profile page (see Figure 2-13), you will be asked to send your hardware profile to Linpus. This info is especially useful for Linpus to improve our support on all popular hardware and platforms.

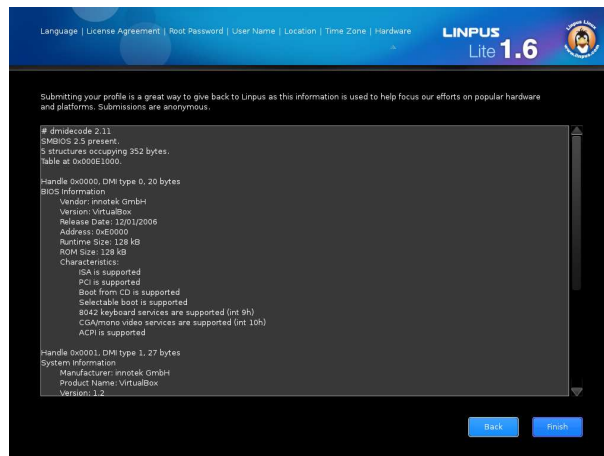


Figure 2-13 Hardware profile page

# 3. Getting Started

## 3.1 Gnome 3 Desktop

The default desktop for Linpus Lite 1.6 is the traditional Gnome desktop (see Figure 3-1). You can then go to Liveupdate to customize your desktop with a number of advanced features. For example, Gnome3 with a new “Today” panel displaying your schedule for that day and the weather forecast by default (see Figure 3-3). In addition there is an improved dock, instant notifications and a range of applications. In Gnome 3 desktop, all applications with similar purposes are grouped together in “Applications” panel. There are totally 8 categories by default: Accessories, Games, Graphics, Internet, Office, Other, Sound & Videos and System Tools (see Figure 3-4).

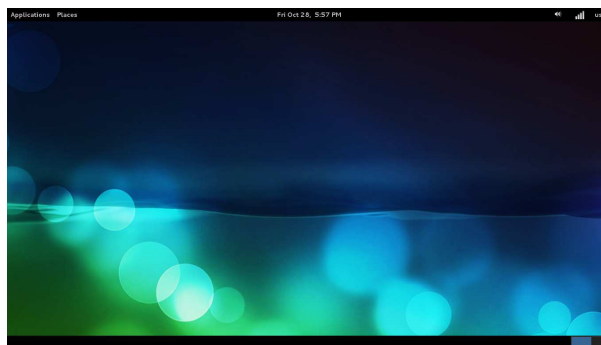


Figure 3-1 Gnome desktop

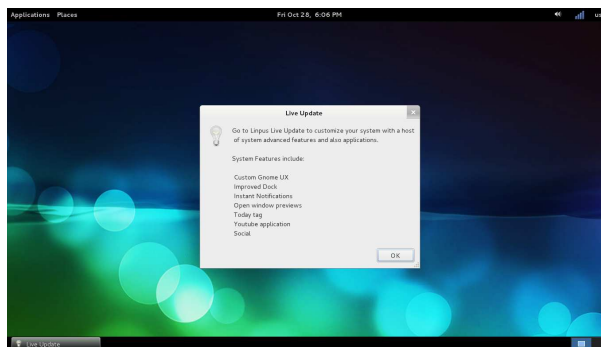


Figure 3-2 Upgrade notification



Figure 3-3 Gnome 3 desktop – Today panel



Figure 3-4 Applications Panel

- Accessories: system utilities
- Games: Fun programs like games
- Graphics: view photo programs
- Internet: Programs that access and work through the Internet
- Office: Spreadsheet, work processor and presentation programs
- Other: other applications.
- Sound & Videos: multi-media programs
- System Tools: Setting tools

If you want to configure the themes and background picture, you can click Applications panel > System tools > Settings to launch the “Background” setting tool (see Figure 3-5).

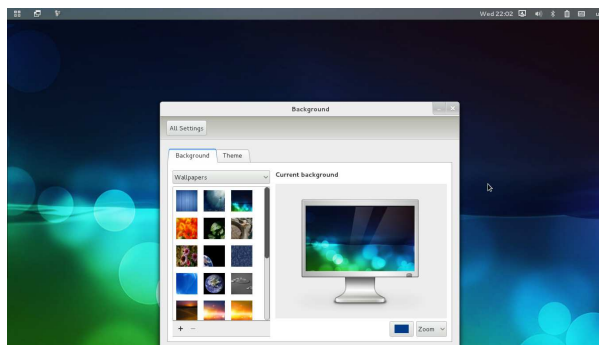


Figure 3-5 Background &amp; Theme configuration

The default panel can be dragged and dropped to swap between Today, Windows and Applications (see Figure 3-6).

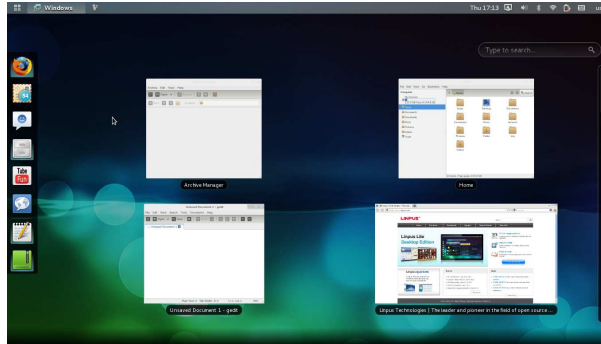


Figure 3-6 Change “Windows” as default panel

You can drag and drop to add favorite applications from the “Applications” panel to the dock panel. When an application is launched that icon will also display on the dock panel. To then display the thumbnail preview of the opened window (see Figure 3-7) you can simply mouse over or right click. After an application window is launched, the dock panel will hide automatically. Dock panel will be enable when you move your mouse cursor near the left border of the desktop.



Figure 3-7 Thumbnail preview of opened window

## Instant Notifications

When you create a mail box, YouTube account or social networking account through “Mail” (Evolution), “TubeFun” or “Gwibber”, Linpus Lite will display instant notifications of incoming e-mail, new subscription (video) or new messages on the application icon (see Figure 3-8). Gnome 3 desktop also fully integrates Empathy chat and message function (see Figure 3-9).

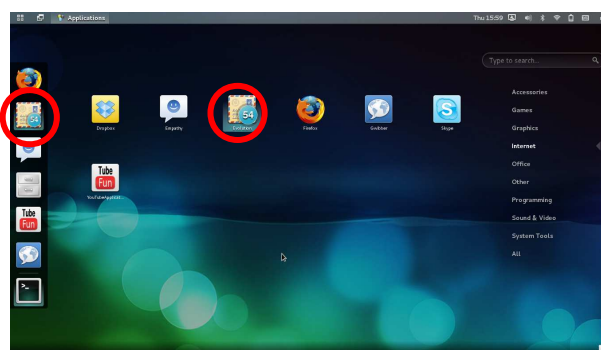


Figure 3-8 Instant notifications

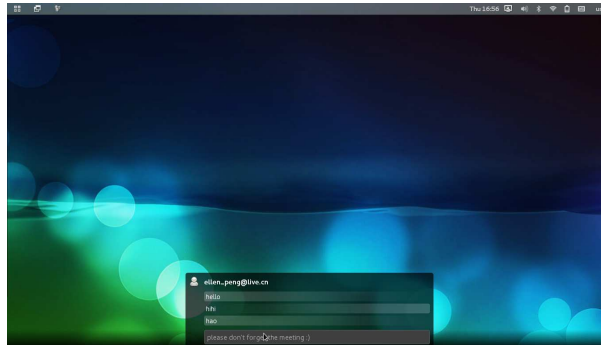


Figure 3-9 Instant messages

## Launch Manager

Launch manager is a quick and simple control panel for you to change your systems major settings. You can click the launch manager icon in the top right corner of Gnome panel or launch via the function keys. All functions with similar purposes are grouped together in the “Launch Manager” panel. There are in total 5 categories: Connection, Video output switcher, Display resolution, Sound control and Power off (see Figure 3-10).

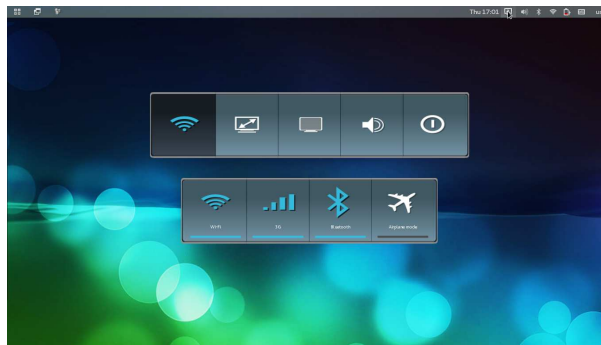


Figure 3-10 Launch manager

- Connection: 3G, Bluetooth, WiFi devices control and airplane mode.
- Video switcher: video output switch between LCD, Clone & D-sub/HDMI display only.
- Display resolution: change system resolution.
- Sound control: system volume and microphone control.
- Power off: Shut down, Sleep, Lock Screen and Logout.

## 3.2 Online Update Service

If your network is connected, you will be notified that new applications are available for you to download and install from the Linpus server.



Figure 3-11 Online update service

You can launch the Linpus online update service (see Figure 3-11) from under System Tools > Live Updates > Add/Remove. The icons of those newly added applications will be displayed on the “Applications” panel. After you select the item and click the Install button, you can start to install new applications (see Figure 3-12).

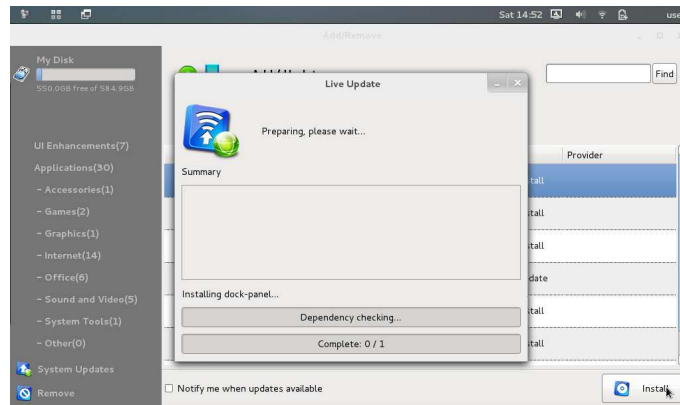


Figure 3-12 Installing new application from online update service